

iRIS-CAM Camera (for iRIS 320 / iRIS 350)



The iRIS-CAM camera accessory for the iRIS 3x0 datalogger has been designed and constructed using technology appropriate for use in harsh outdoor and industrial environments.

Key features

- Low power
- Fully weather sealed
- Images may be retrieved via any communication method available to the host datalogger.
- Cost effective

GENERAL DESCRIPTION

Power Supply

No internal power supply or battery is required. The iRIS-CAM is powered directly from the iRIS datalogger via the interconnecting cable.

Imaging

The fixed focus camera module is capable of capturing and processing full colour images in one of four different resolutions. These are stored in a compressed JPEG format for compatibility with a wide range of viewing applications.

The typical size of each compressed image is around 5 – 45kb depending on the resolution and complexity of the image.

iRIS Image Capture Modes

The iRIS 320 can capture images based on a schedule, an external trigger attached to one of the digital inputs (e.g. a contact switch), or on trigger value(s) for any connected sensors.

Enclosure

The case is constructed from a special corrosion-resistant aluminium alloy that is hard anodized. This gives a very high degree of mechanical strength and EMI shielding. Cable entry is through a small hole on the left side. The electronics are potted in epoxy resin for complete waterproofing. Four holes are provided for secure mounting.

Deployment

A PC-based utility is included for final setup of the camera before it is connected to the iRIS datalogger and deployed. The utility allows pictures to be taken and viewed directly from a laptop or PC.



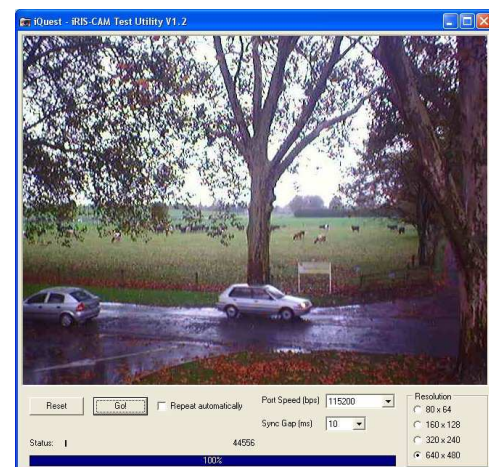
SPECIFICATION

- **SIZE:** 162mm x 116mm x 65mm (4.60in x 6.37in x 2.64in) (WxHxD)
- **MASS:** 300 g (10.6oz) including 5m (16.4ft) shielded cable.
- **POWER SUPPLY:** 3.3V d.c +/- 10% (powered from logger via cable)
- **RESOLUTION:**
 - Selectable 80x60, 160x120, 320x240 or 640x480 pixels, 24 bit colour, JPEG format.
- **STANDARD LENS:**
 - F2.8
 - Focal length 4mm
 - Integral IR filter
- **ENVIRONMENTAL:**

Operating: -10 °C to +70 °C (14 °F to +158 °F).

Storage: -10 °C to +85 °C (14 °F to +185 °F).

Enclosure sealed to IP67. However, to avoid defocus due to water droplets on the lens, installation within a windowed enclosure is recommended.



(Actual screen shot from iRIS-CAM using PC-based setup utility at full VGA resolution)

